

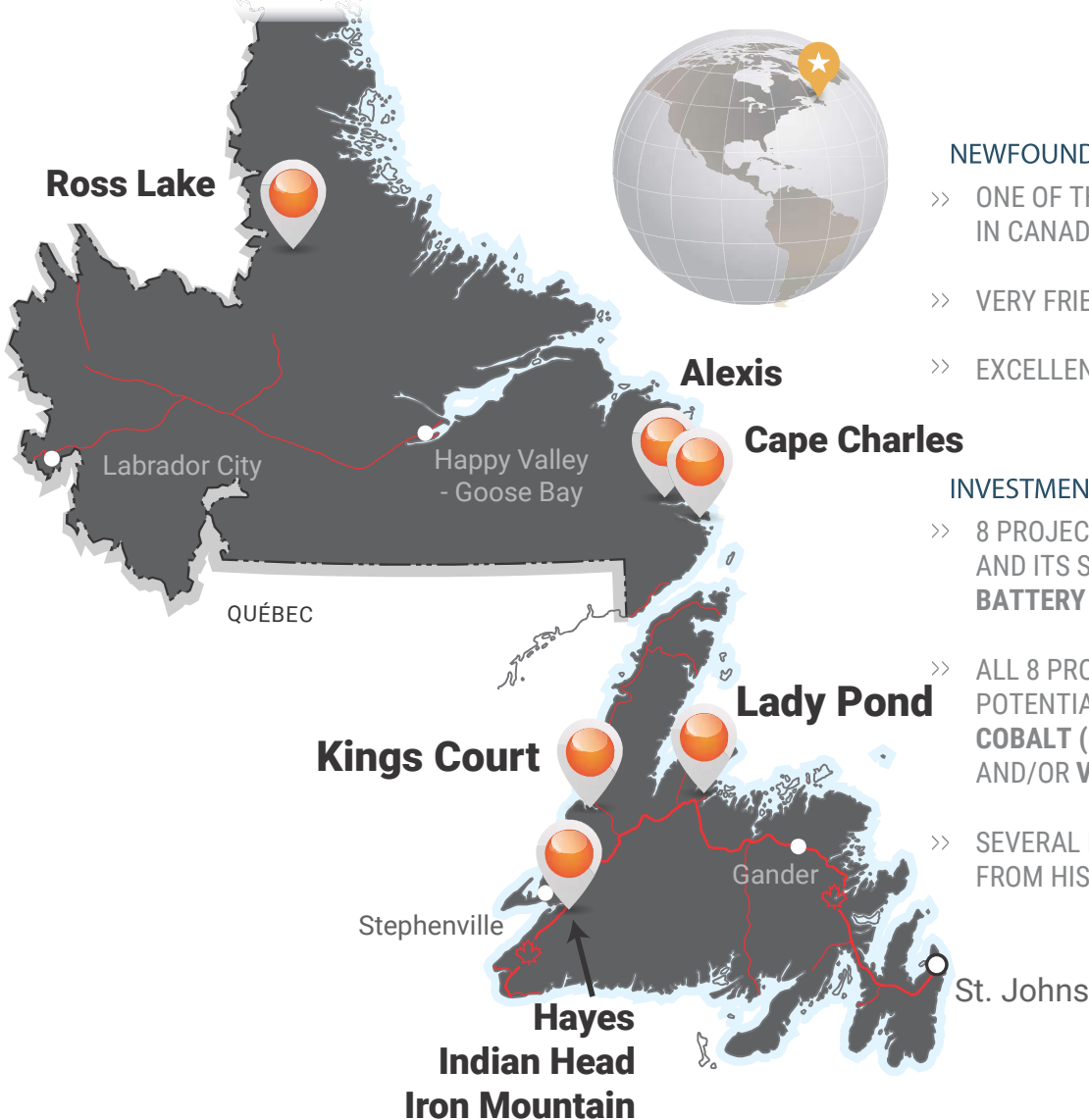


KapuskasingGold

TSXv:KAP

www.kapuskasinggold.com

Strategic Portfolio of **Copper/Cobalt** and **Iron Ore/Vanadium** Properties in Newfoundland & Labrador



NEWFOUNDLAND AND LABRADOR

- >> ONE OF THE BEST JURISDICTIONS IN CANADA FOR NEW DISCOVERIES
- >> VERY FRIENDLY PRO-MINING ENVIRONMENT
- >> EXCELLENT REBATE SYSTEM TO EXPLORERS

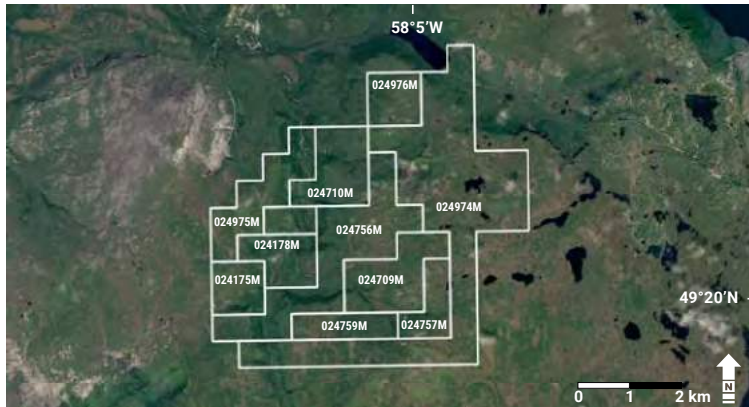
INVESTMENT HIGHLIGHTS

- >> 8 PROJECTS POSITIONS KAP AND ITS SHAREHOLDERS IN THE **BATTERY TECHNOLOGY METALS SECTOR**
- >> ALL 8 PROPERTIES WERE ACQUIRED FOR THEIR POTENTIAL TO HOST **COBALT (CO), GOLD (AU), COPPER (CU) AND/OR VANADIUM (V) MINERALIZATION**
- >> SEVERAL PROJECTS BENEFIT FROM HISTORIC EXPLORATION

KAPUSKASING GOLD Key Properties

100% OWNED

KINGS COURT PROPERTY

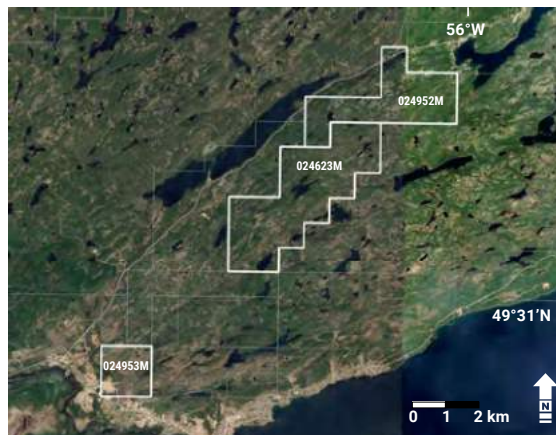


- Significant historic exploration highlights of the property include:
 - channel samples of 19% Cu over 2.13 metres and 15.87% Cu over 2.59 metres
 - a drill hole with 12.6% Cu over 1.52 metres and
 - chip sampling of 7.75% Cu over 2 metres
- Values of up to 0.13% Co were reported although quoted analysis for Co is limited
- The property hosts at least 8 different Cu showings with significant surface results
- Cu assays were realized from both channel samples and drilling
- Compilation of historic data will guide a detailed sampling program to evaluate the Co and Cu potential

100% OWNED

LADY POND PROPERTY

- 33 claims (825 hectares) located approximately 45 km from the Nugget Pond Milling Facility operated by Rambler Metals and Mining Canada
- Located in the prolific Green Bay Mining District, on Springdale Peninsula, Newfoundland
- The review of historic data has located selected grab sample results of blasted rock on a dump site located at Lady Pond. Three of the samples returned the following results:
 - 1.08 g/t Au, 5.84% Cu and 0.05% Co
 - 0.81 g/t Au, 3.36% Cu and 0.12% Co
 - 6.51 g/t Au, 6.80% Cu and 0.14% Co



SHARE INFORMATION

*AS OF MARCH 10, 2017

TSXV: KAP	
SHARES ISSUED & OUTSTANDING:	38,460,986
OPTIONS:	3,625,000
WARRANTS:	16,029,991
FULLY DILUTED:	58,115,977
FOR FURTHER DETAILS, PLEASE VISIT: SEDAR	

MANAGEMENT & DIRECTORS

JONATHAN (JON) ARMES B.A.Sc.
President & CEO, Director

ANDREW DAVIDSON C.A.
Director

GARRY CLARK B.Sc., P.Geo.
Exploration Manager, Director

JOHN KIERNAN P.Eng.
Director

CONNIE NORMAN
Corporate Secretary

JAMES FAIRBAIRN
CFO, Director

CONTACT

JONATHAN ARMES
501-133 Richmond St. W.
Toronto, ON, CANADA, M5H 2L3
TEL: 416.708.0243